

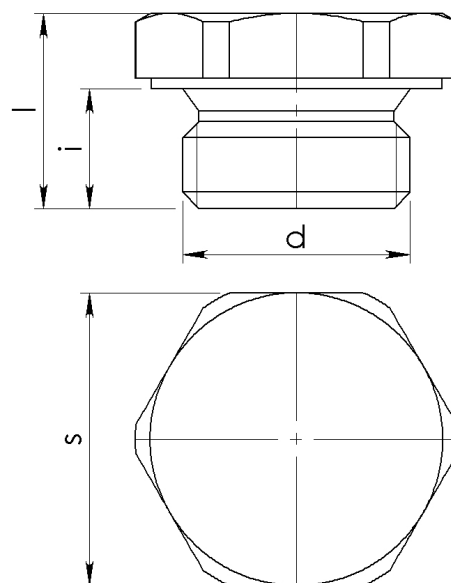
## 11B

## Zinc plated steel screw plug with hexagon head designed to be assembled with a washer

BODY MATERIAL White Zinc-plated Steel

## DESCRIPTION

Screw plug with hexagon head made of zinc plated steel. Designed to be assembled with a washer.



Article	d	i[mm]	s[mm]	l[mm]	weight[g]
010100017	G1/8	8	14	13	10
010100018	G1/4	9,5	17	15	18,5
010100019	G 3/8	9,5	22	16	35
010100020	G 1/2	11	27	18	60
010100021	G 3/4	12,5	32	20	98
010100022	G 1	14	40	22	163