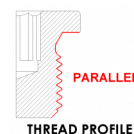


Magnetic screw plug with hexagon socket made of steel white zinc plated with neodymium magnet

BODY MATERIAL White Zinc-plated Steel

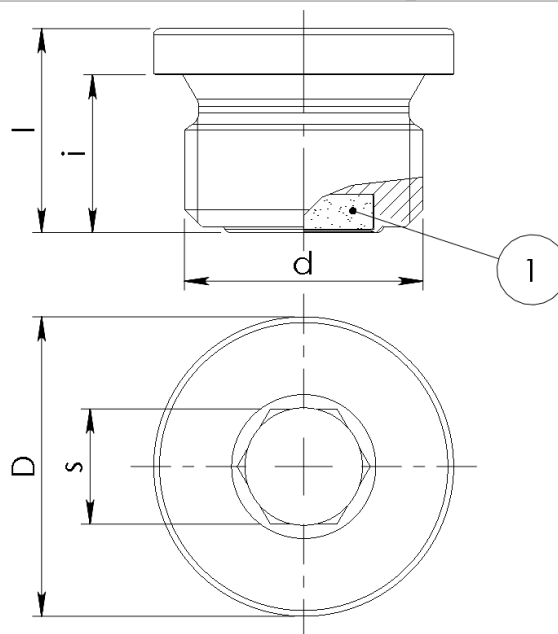
(1) PERMANENT MAGNET Neodymium

RANGE TEMPERATURE +80 [°C] max ; +176 [F] max



DESCRIPTION

Magnetic drain plug with hexagon socket D908 made of zinc plated steel. In this model the magnet is completely embedded in the body plug. Thanks to this characteristic, the risk of collision with inner gears has been avoided. The permanent magnet attracts and holds abrasive, ferrous metal particles preventing their circulation through the lubrication or hydraulic system. The magnetic "filter" plug is recommended for gearboxes and in any application with gears in bath of oil.



Article	d	i[mm]	D[mm]	s[mm]	l[mm]	weight[g]
110400185	G1/8	7,6	14	5	10,6~	6,5
110400186	G1/4	11,6	18	6	14,6	14,5
110400187	G 3/8	11,7	22	8	14,7	22,5
110400188	G 1/2	13,7	26	10	17,7	43
110400189	G 3/4	15,7	32	12	19,7	75
110400190	G 1	15,7	39	17	20,7	118
110400191	G 1 1/4	15,7	49	22	20,7	175
110400192	G 1 1/2	15,7	55	24	20,7	228